



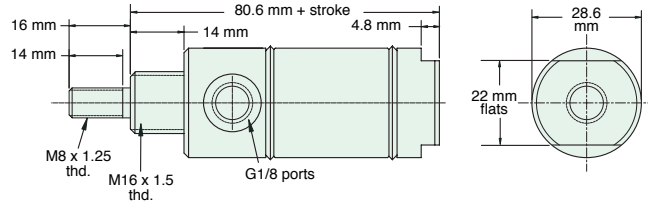
25 MM BORE STAINLESS STEEL METRIC CYLINDER

M-SDR-17-□-□

Double Acting



Mount: Stud **Standard Stroke Lengths:** 10 mm, 25 mm, 40 mm, 50 mm, 80 mm, 100 mm, 125 mm, 160 mm
Type: Rotating Rod
Options: B, R, V



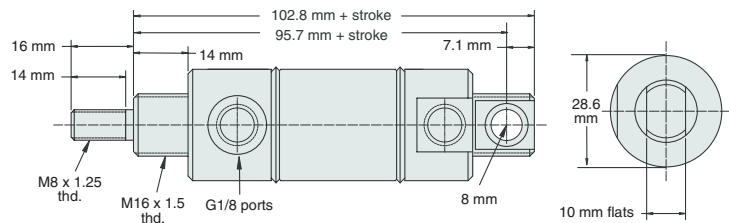
Nut included, but not shown on drawing

M-UDR-17-□-□

Double Acting



Mount: Universal **Standard Stroke Lengths:** 10 mm, 25 mm, 40 mm, 50 mm, 80 mm, 100 mm, 125 mm, 160 mm
Type: Rotating Rod
Options: B, R, V



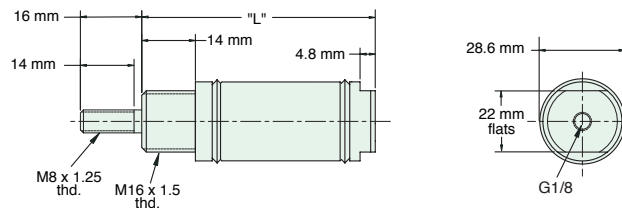
Furnished without nut(s). Order Part No. [NM16-150](#).

M-SSR-17-□-□

Single Acting



Mount: Stud **Standard Stroke Lengths:** 10 mm, 25 mm, 40 mm, 50 mm, 80 mm, 100 mm, 125 mm, 160 mm
Type: Rotating Rod
Options: B, R, V



Nut included, but not shown on drawing

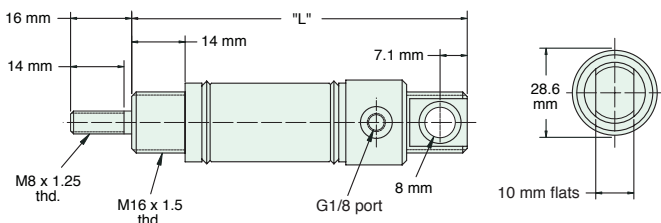
"L" (mm) for Standard Strokes								
Stroke	10	25	40	50	80	100	125	160
	75	90	120	129	188	208	247	311

M-USR-17-□-□

Single Acting



Mount: Universal **Standard Stroke Lengths:** 10 mm, 25 mm, 40 mm, 50 mm, 80 mm, 100 mm, 125 mm, 160 mm
Type: Rotating Rod
Options: B, R, V



Furnished without nut(s). Order Part No. [NM16-150](#).

"L" (mm) for Standard Strokes								
Stroke	10	25	40	50	80	100	125	160
	97	112	142	151	210	230	269	333